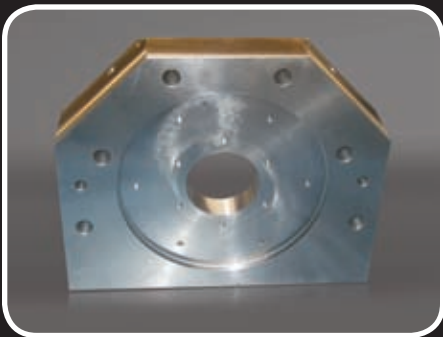




YOUR CUSTOM MACHINE SHOP



2175 Rochester Drive • Aurora, IL 60506
www.sharemachine.com
Phone: 630-906-1810 • Fax: 630-906-1812

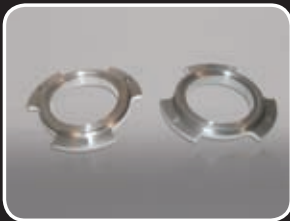


CLOSE TOLERANCE • REPEATABLE

Share Machine has been in business more than 15 years and has more than 100 years of precision machining experience on staff. Our state-of-the-art multitasking machines, CNC Machining Centers, turning and mill/turn machines, and a manual tool room produce quality work at the highly competitive prices necessary in today's manufacturing environment. We specialize in CNC turning, machining, and repair of custom production parts, prototype work and piece parts. The ability to provide quick, custom parts for machine and tool repair/maintenance keeps our customers downtime to a minimum. A modern Quality Control System monitors measurement, processes and performance. Share Machine, Inc. has complete range of vertical mills handling part sizes up to 25" x 60", also have extensive capabilities in turning and mill/turn applications. We have a wide range of Mazak lathes to run parts ranging from $\text{Ø}1/4"$ - $\text{Ø}22"$.

Family owned and operated, Share Machine, Inc. specializes in:

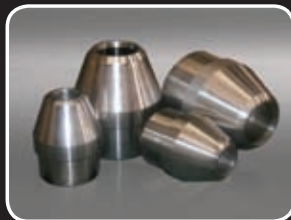
Custom precision machining of prototypes and industrial parts;



Reverse Engineering of replacement parts;

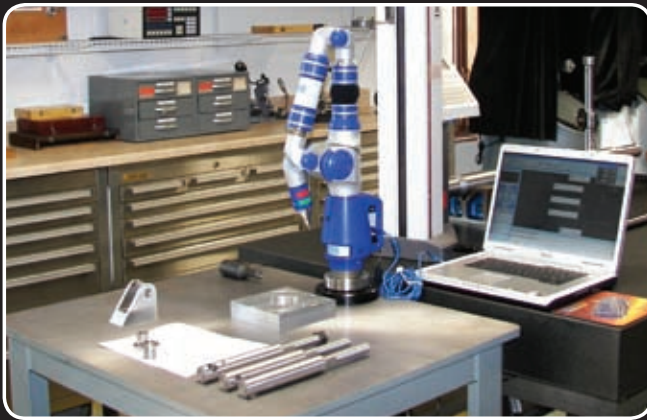


Low to medium volume production runs of machined industrial parts.





At our new production facility in Aurora, IL, skilled machinists will precision machine your parts per print or 3-D Model, or reverse engineer parts per sample...done right...the first time...on time!



Share Machine works with carbon steel, all grades of Stainless, Aluminum, Brass, plastics, and Exotic metals.



Aluminum



Bronze & Brass



Carbon Steel



Plastics



Stainless



Production Equipment

CNC MACHINING CENTERS

Haas VF-5/40XT 60"x26"x25"
Travel with 4th Axis Capability
Haas VF-3's 40"x20"x25"
Travel with 4th Axis Capability
Mazak VTC-16B 44 "x16"x20"
Travel with 4th Axis Capability

MANUAL MACHINES

4 Clausing Kondia Knee Mills -
10" x54" Tables (Sony Digital Readouts)
1 Bridgeport - E-Z Track 2 Axis
CNC control 9" x 449" Table
1 Clausing Kondia - Fagor 2 Axis
CNC control 10"x54" Table
3 Clausing Colchester Lathes -
15" Swing x 50" Centers
WAFUM TUR-630M Lathe -
25" Swing over bed x 160" Centers
Tarnow TUJ-50M Gap Bed Lathe -
22" Swing over bed x 120" Centers
Sunnen 1660 Honing Machine
Bead Blast Cabinet
Amada Automatic Band Saw
Doringer Cold Saw

Numerous Micrometers, Surface Plates, Gage Blocks & Pins, and many other Various Gages and Inspection Equipment that are calibrated to the AS9100 & ISO 9001:2000 Quality Standards.

CNC LATHES:

Mazak SQT17MS-10" Chuck/
2.5 Thru / 6" Sub Chuck/Mill Turn
Mazak SQT10M-8" Chuck/2" Thru/
Mill Turn
Mazak QT 15N-8" Chuck/2" Thru
Mazak M4 -22" Swing x 40" Centers

INSPECTION /QUALITY CONTROL*

Complete Quality Control Department
Faro Platinum Arm Portable -
4 foot working area and precision
up to .0002" (.005mm)
Mahr Digimar CX1 600mm Motorized
Digital Height Master
Scheer Tumico Optical Comparator with
Digital Readout @ .0001" resolution
48" x 72" Class A Granite Surface Plate
Wilson/Rockwell Digital
Hardness Tester 500 Series

Industries Served

Our customers can be found in a broad cross section of American Industry. We gain strength and knowledge from this diversity.

- Bottling Equipment
- Castings
- Corrugating & Box Equipment
- Earth Moving Equipment
- Food Processing
- Forgings
- Hydraulic Equipment
- Lift Truck Manufacturing
- Machine Tool Builders
- Pump Manufactures
- Oil Refinery
- Packaging Equipment
- Paper Mill Equipment
- Printing
- Railroad
- Stamping Equipment
- Valve Manufactures
- Water Treatment
- Aluminum Can Industry



Share Machine Incorporated
2175 Rochester Drive • Aurora, IL 60506
www.sharemachine.com

Experts In Close Tolerance, Custom Machined Parts
Phone: 630-906-1810 • Fax: 630-906-1812